



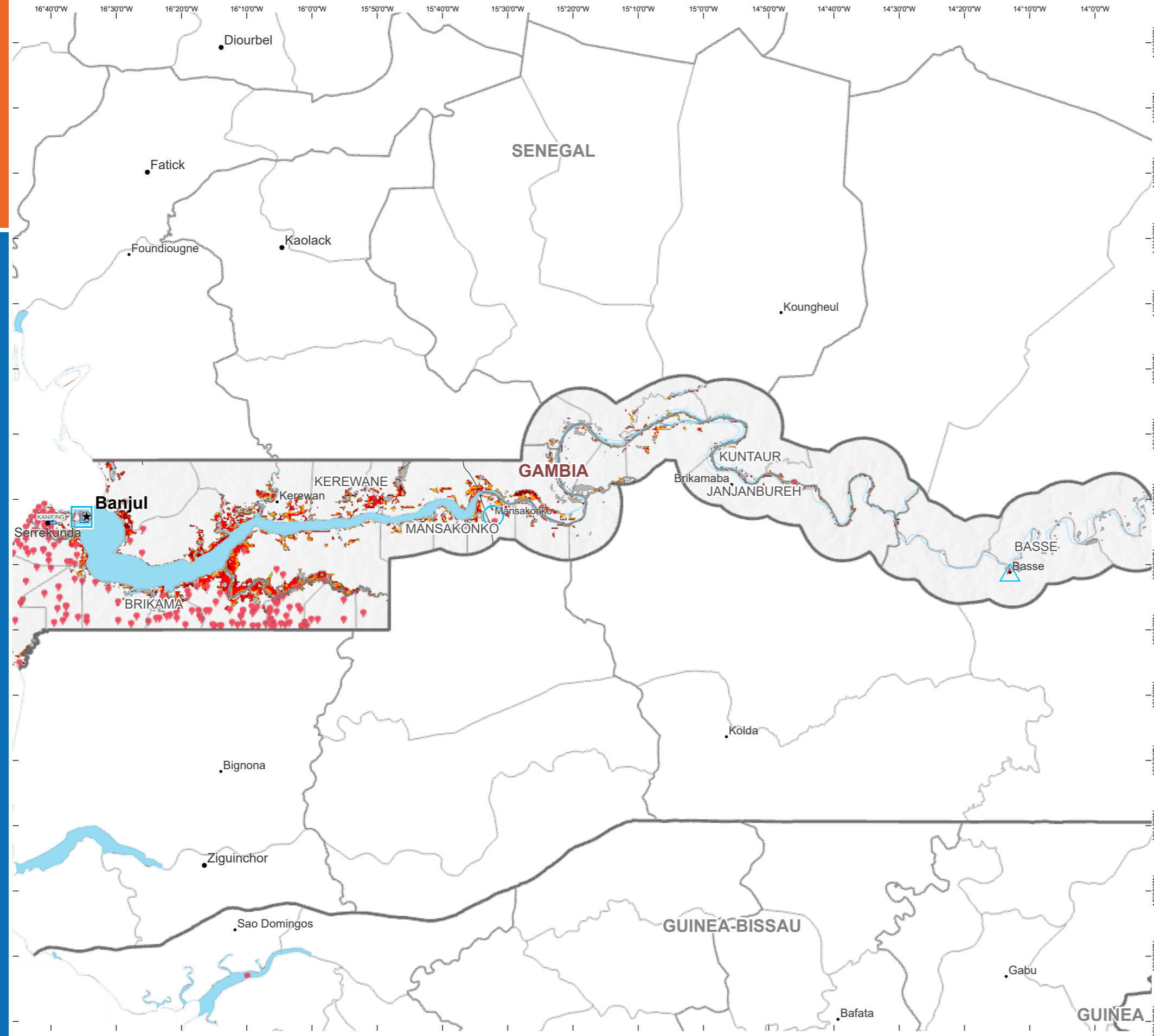
World Food Programme



Flood event summary

10, Aug 2022

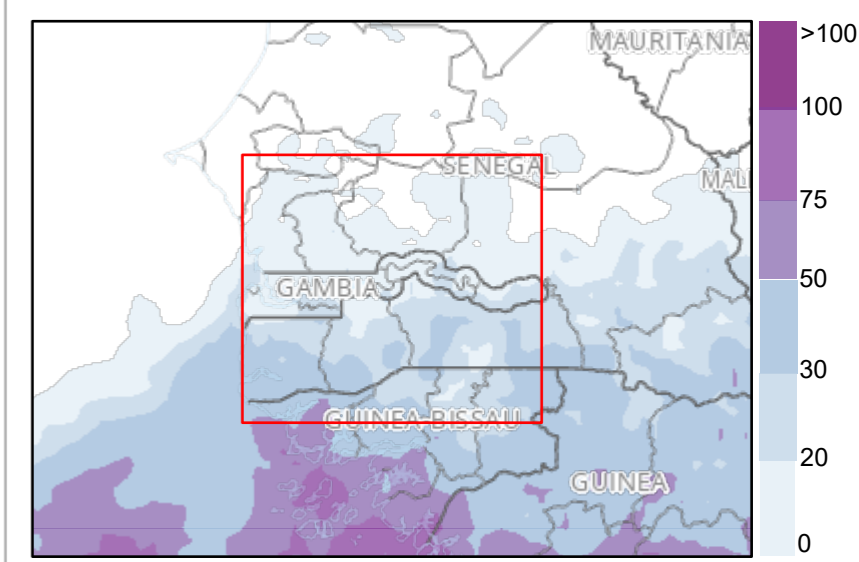
Country	The Gambia
Event Name	2022-08-10
Date Published	2022-08-02
Situational Overview	At least 2 people died and over 230 households were severely affected or displaced after the heaviest rainfall in over 20 years caused flooding in parts of the Gambia from late July 2022.
Initial Impact Summary	235 [buildings] Buildings damaged in The Gambia 1,000 [people] Evacuated in The Gambia
Source	https://go.ifrc.org/emergencies/6098



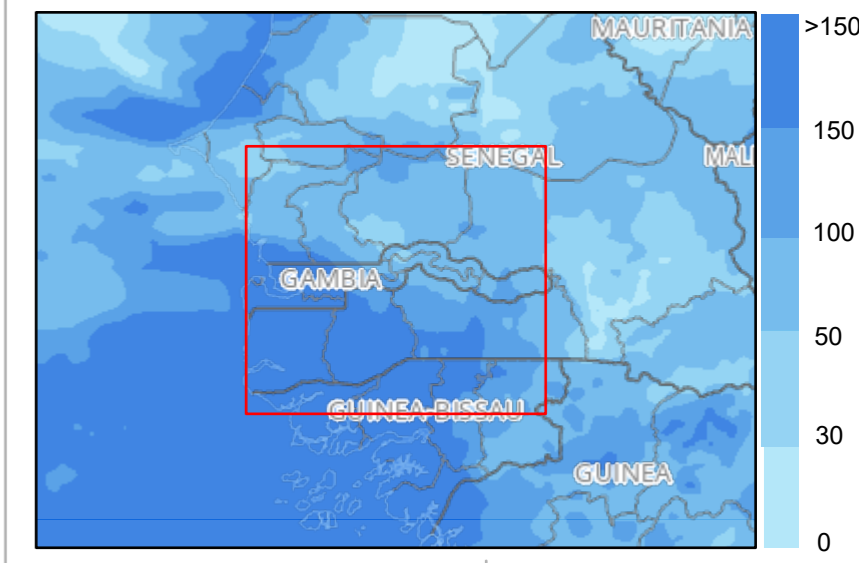
Rapid Impact Summary

- 48,127 (hectares)** Satellite observed flooded or inundated area
- 10,817** Estimated number of people living in the flooded pixel
- 67 (hectares)** Estimated flooded cropland areas

5-days precipitation forecast



7-days past accumulated precipitation



	Country Office		River		Partly flooded		Refugee Location
	Field Office		Road		Moderately flooded		Refugee Urban Location
	Sub Office		International Boundary		Highly flooded		
	Warehouse		Administrative Boundary 1				
	National Capital		Special boundary line; Armistice, undetermined or administrative line; Autonomous region boundary; Other; Sovereign base limit				
	Major Town		Permanent Water Bodies				
	Small Town/ Village		Historical Maximum Flood Extent from MODIS 2000 - 20018 Source: DFO and Cloud2Street				

***Satellite Observed Flooding (NOAA VIIRS)**

Partly flooded
Moderately flooded
Highly flooded

Population of Concern (UNHCR)

Refugee Location
Refugee Urban Location

**Flooded pixel definition:
Partly flooded: 0 - 20% of pixel is with water
Moderately flooded: 20-60 % of pixel with water
Highly flooded: 60-100% of pixel with water*

In partnership with

ADAM
Automated Disaster Analysis and Mapping
ADAM Flood Event

FloodList

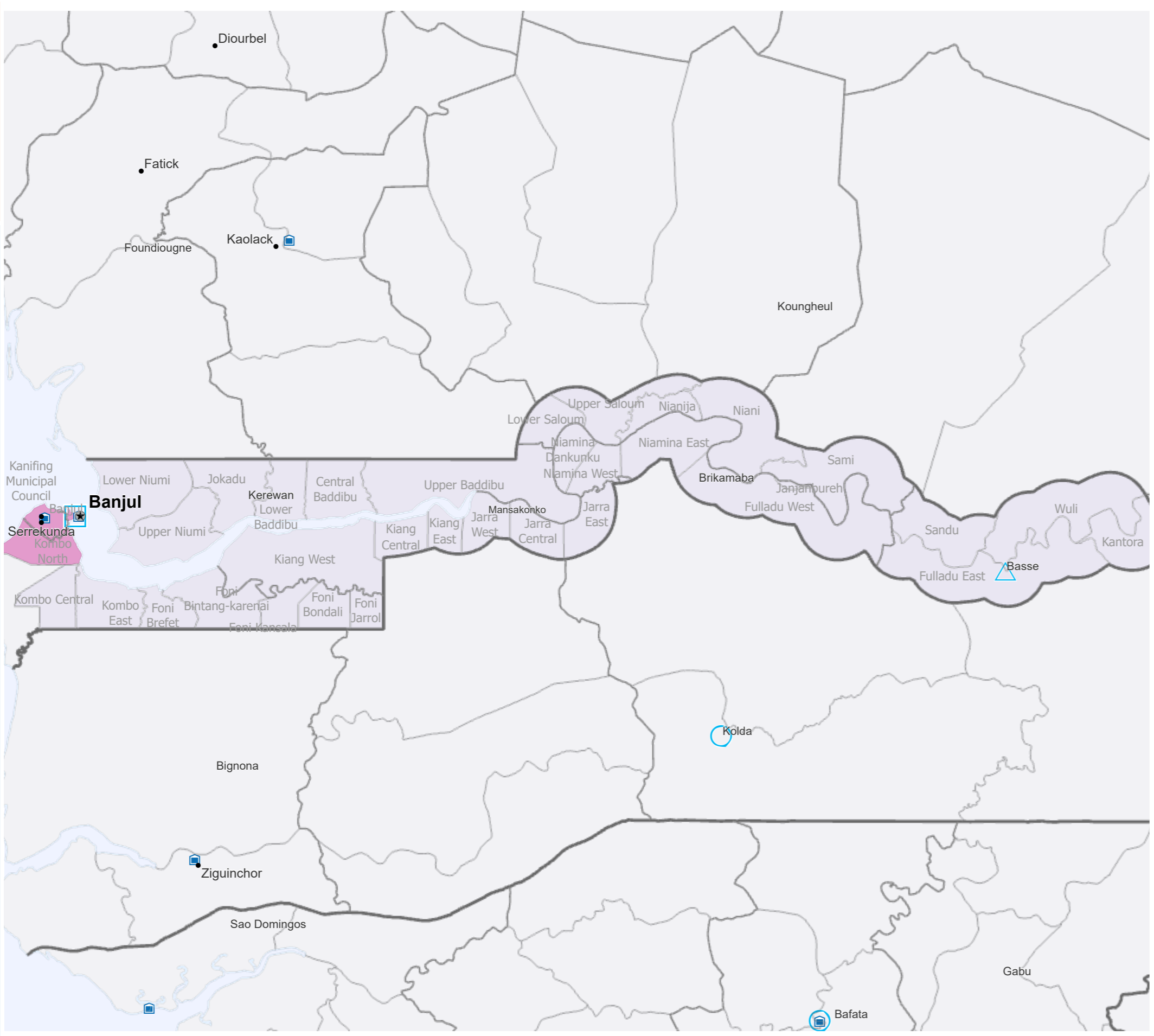
The designations employed and the presentation of material in the map(s) do not imply the expression of any opinion on the part of WFP concerning the legal or constitutional status of any country, territory, city or sea, or concerning the delimitation of its frontiers or boundaries.

Data sources: WFP offices; WFP - Boundaries: UN Map, WFP - Roads: ©OpenStreetMap Contributors - Populated places: GeoNames - Accumulated rainfall: GPM - Weather forecast: ECMWF - Flood Detection: NOAA-VIIRS, MODIS NRT, ESA Sentinel 1 - IDP/Refugee Locations: UNHCR - Terrain: ESRI - Surface Water/Seasonality: JRC - Cropland Mask: NASA GFSAD30 - Population: WorldPop / GHSL - Maximum Flood Extent: NASA MODIS/DF0 and C2S

Date Created: 10 Aug 2022 - Contact: hq.gis@wfp.org

© World Food Programme 2022

Prepared by:
HQ GIS Unit,
WFP Emergencies



Flood Impact Data Aggregation

Derived data are summarized by administrative unit II (admin2). For any boundary related concerns, please write to wfp.adam@wfp.org. This aggregated information is indicative and for planning purposes only.

Global Data Sources:
Population - WorldPop 2021
Cropland Areas - NASA GFSAD30



Estimated population living within the flooded area (Admin Unit II)



Estimated crop lands within the flooded area (Admin Unit II)



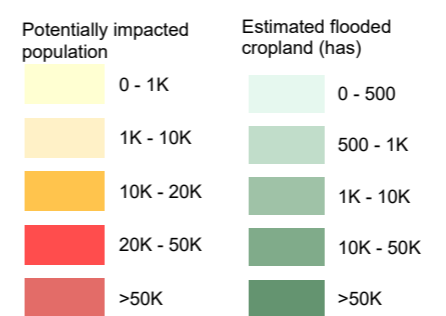
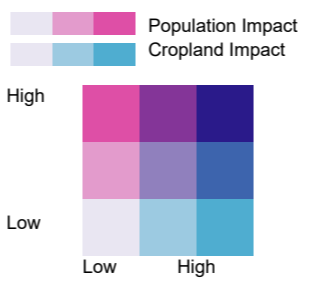
ADAM

Automated Disaster Analysis and Mapping

- Country Office
- Field Office
- Sub Office
- Warehouse
- National Capital
- Major Town
- Small Town/ Village
- River
- Road
- International Boundary
- Administrative Boundary 1
- Special boundary line; Armistice, undetermined or administrative line; Autonomous region boundary; Other; Sovereign base limit
- Permanent Water Bodies

Bi-variate color classification

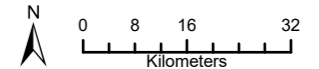
These classes were dynamically derived from the impact estimates on population (x-axis) and cropland (y-axis) for 9 combinations of low-low and high-high impact categories for each administrative level-II (district)



The designations employed and the presentation of material in the map(s) do not imply the expression of any opinion on the part of WFP concerning the legal or constitutional status of any country, territory, city or sea, or concerning the delimitation of its frontiers or boundaries.

Data sources: WFP offices; WFP - Boundaries: UN Map, WFP - Roads: ©OpenStreetMap Contributors - Populated places: GeoNames - Accumulated rainfall: GPM - Weather forecast: ECMWF

Date Created: 10 Aug 2022 - Contact: hq.gis@wfp.org
Map Reference: Stat_dashboard_prod_v1





A.D.A.M Floods - Rapid Impact Analysis

**estimated number of people living in the flooded areas
with at least 100 people potentially affected per district*

Country Code	Region (Admin level 1)	District (Admin level 2)	Flooded Area (hectares)	Flooded Cropland (hectares)	Potentially Impacted Population*
GMB	Banjul	Banjul	749	0	1,095
	Brikama	Kombo Central	366	6	126
		Kombo East	3,362	6	187
		Kombo North	1,424	1	2,438
	Janjanbureh	Fulladu West	1,534	14	124
		Niamina East	3,024	1	112
	Kanifing	Kanifing Municipal Council	1,961	1	4,919
	Kerewane	Jokadu	2,880	0	170
		Lower Baddibu	2,727	0	146
		Lower Niumi	2,449	4	480
		Upper Baddibu	3,831	11	227
		Upper Niumi	4,704	2	192