

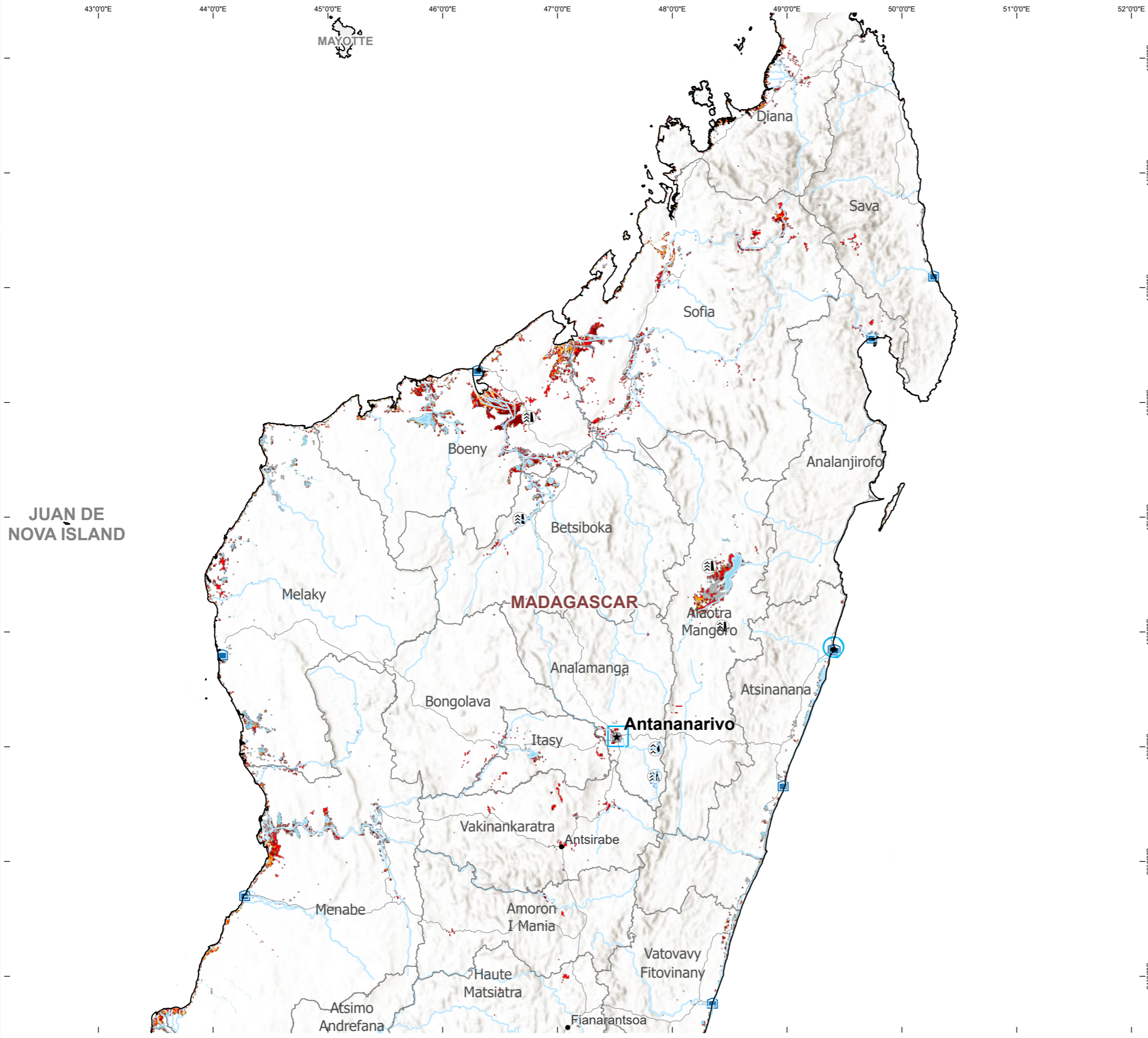
ADAM

Advanced Disaster Analysis & Mapping

Flood Impact Analysis Madagascar

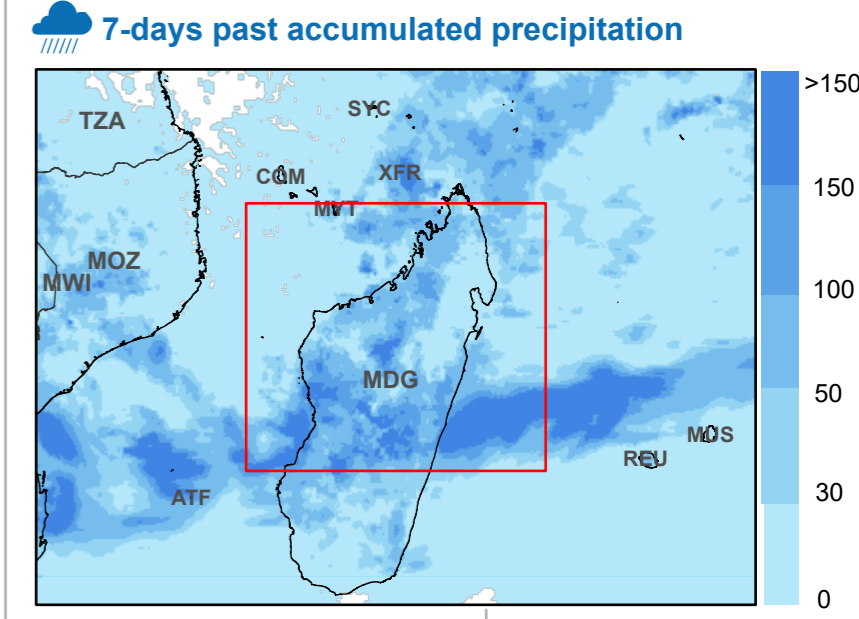
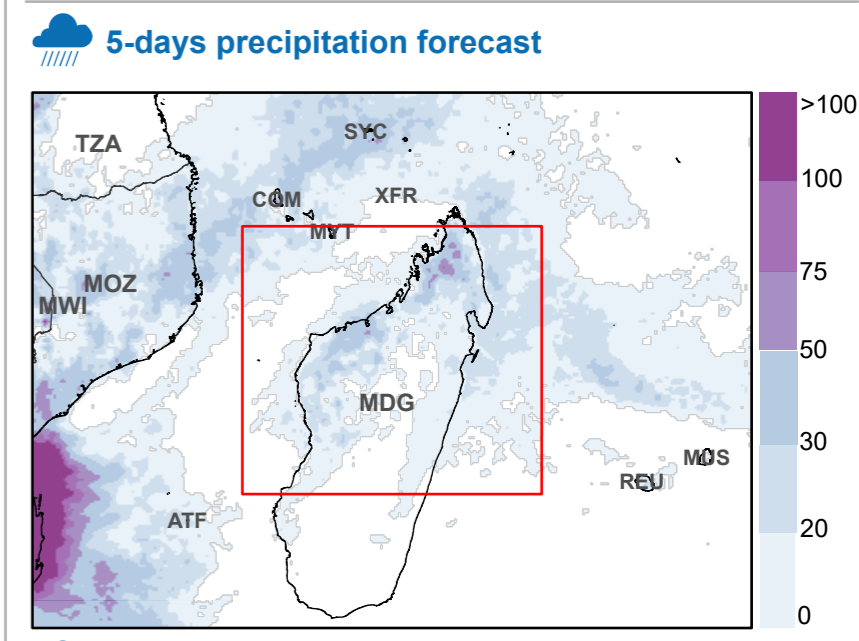
25 February 2023





Rapid Flood Impact Summary

733,414 Total observed flooded or inundated area (hectares)	1,214,587 Total number of people living in the flooded pixel
186,828 Total flooded cropland areas	363,375 Total number of vulnerable population in the flooded area



ADAM
Advanced Disaster Analysis and Mapping
ADAM Event Map

In partnership with
FloodList
European Commission
Joint Research Centre

<ul style="list-style-type: none"> Country Office Field Office Sub Office Warehouse National Capital Major City City 	<ul style="list-style-type: none"> River Road International Boundary Administrative Boundary 1 Special boundary line; Armistice, undetermined or administrative line; Autonomous region boundary; Other; Sovereign base limit Permanent Water Bodies Dam / Reservoir 	<p>*Satellite Observed Flooding (NOAA VIIRS)</p> <ul style="list-style-type: none"> Partly flooded Moderately flooded Highly flooded <p><i>*Flooded pixel definition: Partly flooded: 0 - 20% of pixel is with water Moderately flooded: 20-60 % of pixel with water Highly flooded: 60-100% of pixel with water</i></p> <ul style="list-style-type: none"> Historical Maximum Flood Extent MODIS 2000 - 2018 Source: DFO and Cloud2Street 	<p>Population of Concern (UNHCR) Archive, not to be considered</p> <ul style="list-style-type: none"> Asylum Seeker Accommodation Asylum Seeker Camp Asylum Seeker Centre Asylum Seeker Location Asylum Seeker Settlement
---	---	---	---

The designations employed and the presentation of material in the map(s) do not imply the expression of any opinion on the part of WFP concerning the legal or constitutional status of any country, territory, city or sea, or concerning the delimitation of its frontiers or boundaries.

Data sources: WFP offices; WFP - Boundaries; UN Map, WFP - Roads; ©OpenStreetMap Contributors - Populated places; GeoNames - Accumulated rainfall: GPM - Weather forecast: ECMWF - Flood Detection: NOAA-VIIRS, MODIS NRT, ESA Sentinel 1 - IDP/Refugee Locations: UNHCR - Terrain: ESRI - Surface Water/Seasonality: JRC - Cropland Mask: NASA GFSAD30 - Population: WorldPop / GHSL - Maximum Flood Extent: NASA MODIS/DF0 and C2S

Date Created: 25 Feb 2023 - Contact: hq.gis@wfp.org

© World Food Programme 2023

Prepared by:
HQ GIS Unit,
WFP Emergencies

Rapid Impact Analysis Breakdown

**estimated number of people living in the flooded areas with at least 100 people potentially affected per district. Vulnerable population within flooded area are estimates from WorldPop data.*

Country Code	Region (Admin unit 1)	District (Admin unit 2)	Flooded Area (hectares)	Flooded Cropland (hectares)	Potentially Impacted Population*		
					Total in District	Children (0-9 y.o.)	Elderly (>60 y.o.)
MDG	Alaotra Mangoro	Ambatondrazaka	4,754	2,940	4,540	188	1,183
		Amparafaravola	32,842	25,584	32,643	1,350	8,505
		Andilamena	415	221	305	13	79
		Moramanga	318	88	274	11	71
	Amaron I Mania	Ambatofinandrahana	1,835	1,587	1,461	74	433
		Ambositra	183	105	215	11	64
		Fandriana	485	156	876	44	260
	Analamanga	1Er Arrondissement	18	60	3,981	231	878
		2E Arrondissement	18	0	487	28	107
		4E Arrondissement	32	51	2,027	118	447
		5E Arrondissement	225	268	67,127	3,898	14,795
		6E Arrondissement	822	841	140,870	8,180	31,049
		Ambohidratrimo	5,023	4,274	135,500	7,867	29,870
		Andramasina	1,175	25	1,878	109	414
		Anjozorobe	1,434	913	1,675	97	369
		Ankazobe	221	41	101	6	23
		Antananarivo Atsimondrano	5,189	4,283	98,784	5,732	21,790
		Antananarivo Avaradrano	1,679	1,697	232,050	13,474	51,146
		Manjakandriana	727	4	1,058	61	233
		Analanjirofo	Fenerive Est	1,638	357	6,949	377
	Mananara-Avaratra		2,012	527	5,725	311	1,565
	Maroantsetra		4,556	303	3,798	206	1,038
	Sainte Marie		3,577	22	9,580	520	2,619
	Soanierana Ivongo		806	120	1,138	62	311
	Atsimo Andrefana	Beroroha	11,794	1,375	1,909	111	635
		Morombe	45,570	4,756	9,633	561	3,205

Atsinanana	Brickaville	6,704	1,046	4,057	216	944
	Mahanoro	6,140	1,564	7,731	411	1,799
	Marolambo	1,400	185	1,057	56	246
	Toamasina I	87	3	2,077	110	483
	Toamasina li	3,104	345	9,492	505	2,208
	Vatomandry	2,701	1,514	3,024	161	703
Betsiboka	Kandreho	1,576	101	275	11	77
	Maevatanana	15,746	6,206	10,186	413	2,863
	Tsaratana	3,254	391	1,521	62	427
Boeny	Ambato Boeni	28,041	12,473	33,301	1,519	8,963
	Mahajanga I	909	320	4,536	207	1,221
	Mahajanga li	39,287	4,852	49,538	2,261	13,332
	Marovoay	58,297	33,217	38,939	1,777	10,479
	Mitsinjo	41,394	5,587	6,943	317	1,868
	Soalala	14,734	1,128	4,368	199	1,176
Bongolava	Fenoarivobe	1,077	74	341	15	95
	Tsiroanomandidy	490	118	290	13	81
Diana	Ambanja	18,913	506	14,813	800	3,823
	Ambilobe	18,890	3,253	12,966	709	3,318
	Antsiranana li	18,454	766	15,317	837	3,920
	Nosy-Be	3,698	132	16,321	892	4,177
Fitovinany	Ikongo	143	0	487	20	154
Haute Matsiatra	Ambalavao	1,117	381	1,569	72	500
	Ambohimahaso	372	144	1,045	48	333
	Ikalamavony	1,807	13	185	8	59
	Isandra	141	104	178	8	57
	Lalangina	2,902	658	5,523	254	1,759
	Vohibato	4,351	1,292	11,961	549	3,810
Itasy	Arivonimamo	2,915	1,835	5,105	220	1,484
	Miarinarivo	1,687	1,069	3,277	141	954
	Soavinandriana	1,367	907	2,754	119	802
Melaky	Ambatomainty	773	254	157	6	44
	Antsalova	22,852	1,717	3,309	134	940

	Besalampy	18,047	87	2,598	105	738
	Maintirano	23,214	532	9,125	368	2,590
	Morafenobe	2,356	37	105	4	30
Menabe	Belo Sur Tsiribihina	31,516	5,759	19,647	1,095	5,812
	Mahabo	9,304	1,765	4,724	263	1,397
	Manja	16,631	1,309	3,015	168	895
	Miandrivazo	21,881	6,432	9,579	534	2,834
	Morondava	12,746	166	12,270	684	3,630
	Andapa	2,805	1,840	4,727	260	1,325
Sava	Antalaha	6,526	503	8,658	476	2,428
	Sambava	2,929	801	8,390	461	2,353
	Vohemar	3,791	688	6,291	346	1,764
	Analalava	38,647	3,106	10,306	438	3,033
Sofia	Antsohihy	14,323	958	6,833	291	2,011
	Bealanana	19,480	13,305	7,933	337	2,335
	Befandriana Nord	5,630	417	2,048	87	603
	Mampikony	6,550	2,389	6,635	282	1,953
	Mandritsara	1,503	199	1,231	52	362
	Port-Berge	25,697	2,851	20,230	861	5,954
	Ambatolampy	1,353	777	1,919	89	548
	Antanifotsy	2,101	1,138	2,703	126	772
Vakinankaratra	Antsirabe I	142	175	739	34	211
	Antsirabe li	1,898	1,711	6,591	307	1,881
	Betafo	286	265	413	19	118
	Faratsiho	897	714	1,856	86	530
	Ifanadiana	23	0	142	6	45
	Mananjary	3,585	2,053	7,355	296	2,327
Vatovavy	Nosy-Varika	6,287	4,023	11,093	447	3,509

Learn more about ADAM



wfp.adam@wfp.org



gis.wfp.org/adam/



[@WFP_ADAM](https://twitter.com/WFP_ADAM)

